

# *Mascara*

Best Performing Combinations

Fiber Brushes

# BEST PERFORMING COMBINATION

## VOLUME



### PACK CHARACTERISTICS:

BOTTLE	CAP	ROD	WIPER	BRUSH	FILLING VOLUME	CLICK CLOSE
370114	22405	9211501	320464	311486	12,5 ml	no

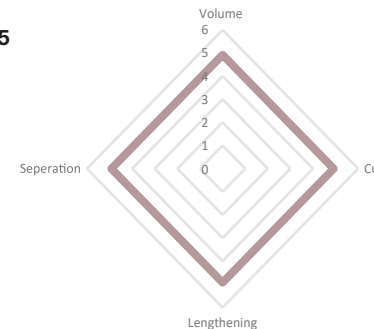
The bottle is molded with a color of GEKA's ready-to-go masterbatch library and is refined with in-house silk screen printing. It is paired with a cap molded in marble effect. Each cap design is unique.

### BRUSH CHARACTERISTICS:

#### 311486 wonderfulVENUS

A brush for wonderfully voluminous, curled, separated and lengthened eyelashes. Due to the big wire diameter the brush has a semi-closed surface. This enables an improved deposit of the bulk and delivers the formulation on the lashes more evenly. Thanks to the two-component EOS2K fiber with its stiffer core and softer exterior surface, clumps have no chance. SEPA fiber treatment creates a chisel-shaped fiber for a better separation of the lashes. The strong fiber enables perfect separation and well-defined lashes because the bristles grab noticeably the lashes on the root. While the conical brush tip enables a convenient application at the eye corners and an easy styling of the bottom lashes.

**VCLS: 5/5/5/5**



### BULK CHARACTERISTICS:

#### #32249

Creamy and thick texture for an incredible volume effect. Encourages thicker, longer, and stronger lashes. Due to three different emulsifiers, it got the ideal balance between volumizing and lengthening. A balanced use of waxes allows for an incredible volume, keeping an intense. Clean formula, free of: TEA, Parabens. Not tested on animals. Compliant with: EU/ FDA regulation.

# BEST PERFORMING COMBINATION

## VOLUME



### PACK CHARACTERISTICS:

BOTTLE	CAP	ROD	WIPER	BRUSH	FILLING VOLUME	CLICK CLOSE
370114	22405	9211501	320464	311550	12,5 ml	no

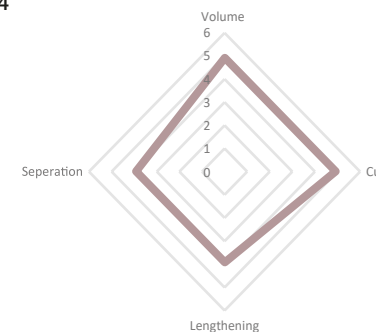
The bottle is molded with a color of GEKA's ready-to-go masterbatch library and is refined with in-house silk screen printing. It is paired with a cap molded in marble effect. Each cap design is unique.

### BRUSH CHARACTERISTICS:

#### 311550 galacticEYES

An extra big brush with an extra big wire diameter of 0.9 mm in woman shape. Made of GEKA's two component EOS2K fiber with expanded surface for increased mascara application. It absorbs the formula very well and applies it to the lashes easily. Thus, this fiber can create volume and feels very soft without stitching on the eyelid. Due to the special brush shape the lashes are pushed upwards during the application and become curled while they get covered with the bulk. Optimum lash lengthening and no clumps thanks to the wedge-shaped fibers, achieved by patented SEPA bristle treatment.

VCLS: 5/5/4/4



### BULK CHARACTERISTICS:

#### #25828

A "3" steps mascara: 1 coat, for a defined volume, 2 coats to add volume and curl, 3 coats for an extreme thickness. It exaggerates your lashes with 3 mascaras in one, multi-purpose product. Clean formula, free of: TEA, Paraffinum Liquidum, Alcohol, Perfume, D5, Parabens. Not tested on animals. Legislation: CEE, FDA, JAPAN, CHINA.

# BEST PERFORMING COMBINATION

## VOLUME & DEFINITION



### PACK CHARACTERISTICS:

BOTTLE	CAP	ROD	WIPER	BRUSH	FILLING VOLUME	CLICK CLOSE
370217	21228	9218401	3294210	311320	8 ml	yes
+ 21146						

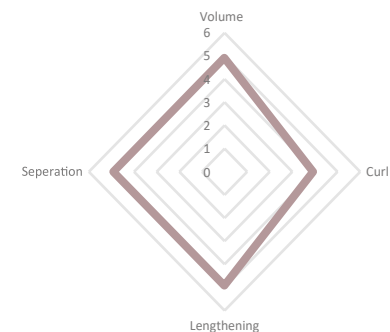
Ready-to-go packaging with metal shell for high-quality appearance. Refined with Click-Close: Reliable closing mechanism for accurate, secure and airtight sealing of the packaging. Decorated with in-house silk screen printing.

### BRUSH CHARACTERISTICS:

#### 311320 lashDUCHESS

A fiber brush in a conical concave shape. Thanks to the irregular surface of GEKA's EOS fiber, the brush easily picks up and applies formula. The HYPNO brush cut creates longer and shorter bristles. Whereas shorter bristles form 5 bulk reservoir zones and give the eyelashes extra volume, the longer bristles reliably separate and lengthen the eyelashes. The separation and lengthening is enhanced due to the SEPA fiber treatment.

VCLS: 5/4/5/5



### BULK CHARACTERISTICS:

#### #32239

A creamy vegan mascara that applies easily allowing for infinite volume, definition and length. Compliance: EU/US/CHINA/JAPAN. Clean formula, free of: Gluten, Parabens, D4/D5, Silicone, Talc, Carmine, TEA, Formaldehyde and precursors, Alcohol, Sulfates SLS/ SLES and Phthalates. Vegan texture not tested on animals.

# BEST PERFORMING COMBINATION

## VOLUME & DEFINITION



### PACK CHARACTERISTICS:

BOTTLE	CAP	ROD	WIPER	BRUSH	FILLING VOLUME	CLICK CLOSE
37858	22080	829301	328424	311646	6 ml	yes

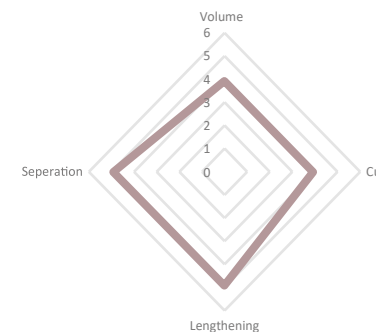
Ready-to-go packaging in slim and elegant design with Click-Close: Reliable closing mechanism for accurate, secure and airtight sealing of the packaging. Decorated with one of GEKA's ready-to-go masterbatch colors and refined with in-house silk screen printing.

### BRUSH CHARACTERISTICS:

#### 311646 tenderLOOK

A classic conical shaped brush made out of GEKA's EOSgreendelta fiber – a bio-based fiber delivered from the 100% renewable castor oil plant. Special feature: The triangular-shaped fiber edges allows for improved separation of each single lash for a fantastic fanned-out look. The brush glides smoothly over the lashes and grabs the lashes by the roots to the tips for a portion of extra length. Great combing effect due to the stiff fiber. The pointed brush tip allows for precise application in the inner eye corners without smudging the skin.

**VCLS: 4/4/5/5**



### BULK CHARACTERISTICS:

#### #29991

A natural origin mascara with the great performance of classic make up. Natural volume, creamy and easy to apply thanks to the natural waxes contained. It contains 95% of ingredients of natural origin. Clean formula, free of: PEG, Silicones, Parabens, TEA, Phenoxyethanol, Carbon Black. Vegan texture, not tested on animals.

# BEST PERFORMING COMBINATION

## VOLUME & LENGTHENING



### PACK CHARACTERISTICS:

BOTTLE	CAP	ROD	WIPER	BRUSH	FILLING VOLUME	CLICK CLOSE
37858	22080	829305	328342	311244	6 ml	yes

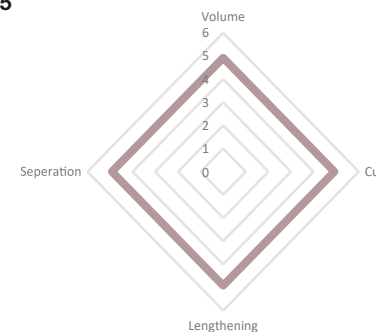
Ready-to-go packaging in slim and elegant design with Click-Close: Reliable closing mechanism for accurate, secure and airtight sealing of the packaging. Decorated with one of GEKA's ready-to-go masterbatch colors and refined with in-house silk screen printing.

### BRUSH CHARACTERISTICS:

#### 311244 skyscrapingEYES

A fiber brush made of EOS fiber paired with HYPNO and SEPA technology. The secret of the EOS fiber is its irregular surface. This is what makes it possible to pick up plenty of the formula and enables a dosed delivery of the bulk with every single stroke. Special feature is the patented HYPNO cut with 3 volume zones, where the bulk is deposited inside, and thus more bulk can be transported onto the lashes for a great volume-effect. Patented SEPA fiber treatment for optimum combability and perfect separation of the eyelashes.

**VCLS: 5/5/5/5**



### BULK CHARACTERISTICS:

#### #30035

The high definition mascara with its nourishing jojoba oil and it's 10% pure pigments emphasizes natural lash definition while adding length and intense. 99% ingredients of natural origin. Compliance: Asian /China/ Korea/US. Clean formula, free of: Parabens, TEA, Phenoxyethanol. Vegan texture, not tested on animals, long-lasting.

# BEST PERFORMING COMBINATION

## VOLUME & LENGTHENING



### PACK CHARACTERISTICS:

BOTTLE	CAP	ROD	WIPER	BRUSH	FILLING VOLUME	CLICK CLOSE
37187	22349	827401	329428	311589	7 ml	yes

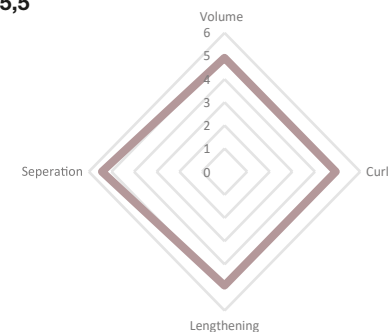
Sustainable packaging made with 100% PCR-PET bottle and 100% PCR-PP cap. Ready-to-go packaging with Click-Close: Reliable closing mechanism for accurate, secure, and airtight sealing of the packaging. Decorated in one of GEKA's ready-to-go masterbatch colors and refined with in-house silk screen printing.

### BRUSH CHARACTERISTICS:

311589 simplySPARKLE

A precise shaped twisted-wire brush for impressive lash separation and an elegant fanned-out look. The innovative EOSbombyx fiber enables an easy volumizing of the eyelashes as the fiber's surface includes many notches, where plenty of bulk is served to be quickly uploaded onto the lashes. Due to the bristle configuration, the lashes are grabbed noticeably from the roots and the hairs are covered just by one stroke. The closed surface of the brush enables an improved deposit of the bulk and delivers the bulk on the lashes more evenly.

**VCLS: 5/5/5/5,5**



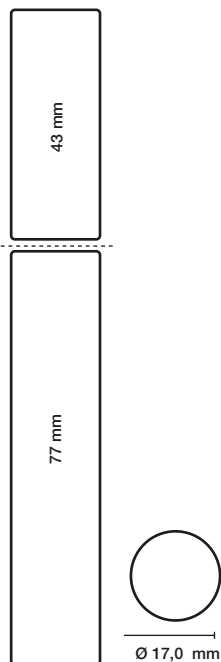
### BULK CHARACTERISTICS:

#32211

100% free of micro-plastics and synthetic polymers. 95% designed with pure natural derived ingredients. Clean formula, free of: Micro plastic, Gluten, Parabens, D4/D5, Silicone, Formaldehyde and precursors, Alcohol, Talc, Fragrance, TEA, Sulfates SLS and SLES, Phthalates, Mineral oil and petrolatum derived. Vegan texture, not tested on animals.

# BEST PERFORMING COMBINATION

## VOLUME & CURLING



### PACK CHARACTERISTICS:

BOTTLE	CAP	ROD	WIPER	BRUSH	FILLING VOLUME	CLICK CLOSE
37187	22349	827401	329428	311511	7 ml	yes

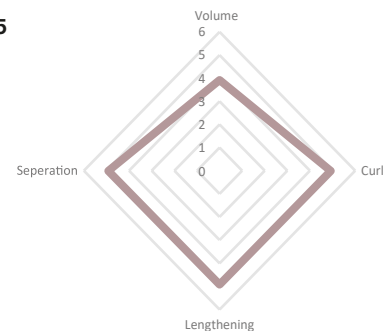
Sustainable packaging made with 100% PCR-PET bottle and 100% PCR-PP cap. Ready-to-go packaging with Click-Close: Reliable closing mechanism for accurate, secure, and airtight sealing of the packaging. Decorated with one of GEKA's ready-to-go masterbatch colors and refined with in-house silk screen printing.

### BRUSH CHARACTERISTICS:

#### 311511 curlQUEEN

The curved shape of the brush is ideally adapted to the shape of the eyeball and the conical tip of the brush enables a convenient application at the eye corner. Due to the brush shape the lashes are pushed upwards and become curled and lengthened while they get covered with the bulk. Thanks to the GEKA's EOS2K fiber with its stiffer core and softer exterior surface, clumps have no chance. Patented SEPA bristle treatment creates chisel-shaped fibers for improved separation. The closed surface of the brush enables an even delivery of the bulk and perfectly separates the lashes.

**VCLS: 4/5/5/5**



### BULK CHARACTERISTICS:

#### #32240

This texture contains a blend of natural waxes derived from olives, sunflowers and a Japanese berry, as a beeswax substitute for buildability, consistency and volumizing effect. Percentage of raw materials of natural origin: from 85% to 97%. Percentage of natural raw materials: 79%. Clean formula, ingredients not intentionally added: Alcohol, D5, D6, Fragrance/Flavour, Gluten, Microplastic, Mineral Wax and Oil, Parabens, PEG, Phenoxyethanol, Preservative, Silicone, Talc, TEA. Legislation: AUSTR, CANADA, CHINA, EU, FDA, JPN, KOREA.



# BEST PERFORMING COMBINATION

## VOLUME & CURLING



### PACK CHARACTERISTICS:

BOTTLE	CAP	ROD	WIPER	BRUSH	FILLING VOLUME	CLICK CLOSE
37187	22349	827401	329428	311526	7 ml	yes

Sustainable packaging made with 100% PCR-PET bottle and 100% PCR-PP cap. Ready-to-go packaging with Click-Close: Reliable closing mechanism for accurate, secure, and airtight sealing of the packaging. Decorated with one of GEKA's ready-to-go masterbatch colors and refined with in-house silk screen printing.

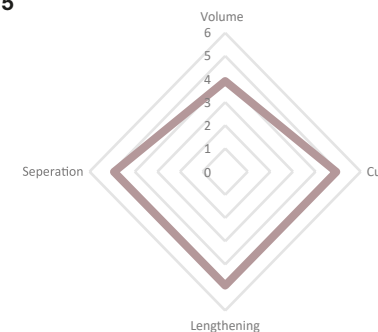
### BRUSH CHARACTERISTICS:

#### 311526 lovelyLASHES

Asymmetrical shaped brush is ideally adapted to the shape of the eyeball. During the application the lashes are pushed upwards and become curled and lengthened while they get covered with the bulk. The longer bristles reliably separate and lengthen the eyelashes because they grab noticeably the lashes on the root. Great lash separation is achieved due to triangular shaped fiber edges of the two-component EOSdelta2K fiber and patented SEPA bristle treatment.

The result: Impressive elongated and defined lashes.

**VCLS: 4/5/5/5**



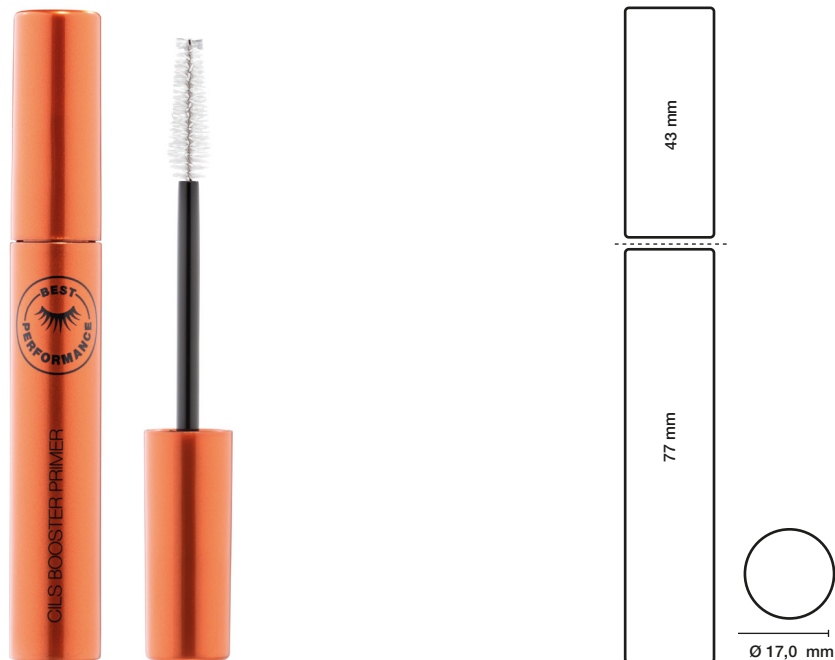
### BULK CHARACTERISTICS:

#### #32240

This texture contains a blend of natural waxes derived from olives, sunflowers and a Japanese berry, as a beeswax substitute for buildability, consistency and volumizing effect. Percentage of raw materials of natural origin: from 85% to 97%. Percentage of natural raw materials: 79%. Clean formula, ingredients not intentionally added: Alcohol, D5, D6, Fragrance/Flavour, Gluten, Microplastic, Mineral Wax and Oil, Parabens, PEG, Phenoxyethanol, Preservative, Silicone, Talc, TEA. Legislation: AUSTR, CANADA, CHINA, EU, FDA, JPN, KOREA.

# BEST PERFORMING COMBINATION

## SPECIAL - LASH BOOSTER



### BRUSH CHARACTERISTICS:

311566 volumeDESIGNER

A precise shaped fiber brush made of GEKA's innovative sunshineFIBER with imposing fiber profile serves as real volume-booster. Its special cross-section in sun shape boasts with a high number of reservoir zones between the sunrays, where plenty of bulk is served to be quickly uploaded onto the lashes. Make-up finish in one stroke – based on the innovative fiber's characteristics. Conical brush shape enables a convenient and defined application especially at the corner of the eyes to reach and intensify even the most delicate ones.

### BULK CHARACTERISTICS:

#32393

An innovative primer is used to accomplish an XXL-lengthening boost for your lashes. Ultra-lengthening effect, extra volume result, long lasting formula, vegan texture, not tested on animals. Compliance: EU/FDA. Clean formula, free of: TEA, Parabens.

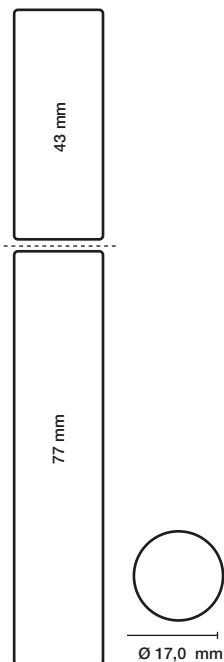
### PACK CHARACTERISTICS:

BOTTLE	CAP	ROD	WIPER	BRUSH	FILLING VOLUME	CLICK CLOSE
37186	22349	827401	329428	311566	8 ml	yes

Ready-to-go packaging with Click-Close: Reliable closing mechanism for accurate, secure and airtight sealing of the packaging. Decorated with one of GEKA's ready-to-go masterbatch colors and refined with in-house silk screen printing.

# BEST PERFORMING COMBINATION

## SPECIAL - TOP COAT



### BRUSH CHARACTERISTICS:

311287 greenQUEEN

Classical brush shape for naturally emphasized lashes. Made of the bio-based greenLINE fiber (made from 100% renewable raw material from the castor oil plant). The open surface of the brush makes the lashes easier to fall into the gaps, where the bulk is deposited inside, and thus more bulk can be transported onto the lashes. The fiber enables perfect separation and well-defined lashes because the bristles grab noticeably the lashes on the root. Convenient application. Fast and adequate bulk delivery.

### BULK CHARACTERISTICS:

#32040:

Vegan, transparent mascara gel. A long lasting, waterproof finish. The invisible topcoat is the perfect tool to make your favorite mascara waterproof, sweat and smudge proof. Can be used as well on brows and alone. Dermatologically tested. Vegan texture. Clean formula, free of :  
Perfume , Silicone, D4/D5, Parabens, TEA.

### PACK CHARACTERISTICS:

BOTTLE	CAP	ROD	WIPER	BRUSH	FILLING VOLUME	CLICK CLOSE
37187	22349	827401	3294210-1469	311287	7ml	yes

Ready-to-go packaging with Click-Close: Reliable closing mechanism for accurate, secure and airtight sealing of the packaging. Decorated with one of GEKA's ready-to-go masterbatch colors and refined with in-house silk screen printing.

geka-world.com



Geka owned photography and imagery from this document, our website and other sources may be used only with written consent. Contact Geka GmbH for permission.  
Copyright © 2021 Geka GmbH. All rights reserved.